

ON THE MOVE

South Salt Lake Newsletter



**iSOUTH
SALT LAKE**

SSLC.GOV

JANUARY 2024

Cherie Wood, Mayor
801-464-6757
mayor@sslc.gov

South Salt Lake City Council Members

LeAnne Huff, District 1
lhuff@sslc.gov

Corey Thomas, District 2
cthomas@sslc.gov

Sharla Bynum, District 3
sbynum@sslc.gov

Nick Mitchell, District 4
nmitchell@sslc.gov

Paul Sanchez, District 5
psanchez@sslc.gov

Natalie Pinkney, At-Large
npinkney@sslc.gov

Clarissa Williams, At-Large
cwilliams@sslc.gov

City Offices

Monday - Friday
8 am to 5 pm
801-483-6000
220 East Morris Ave
SSL, UT 84115

Animal Service 801-483-6024
Building Permits 801-483-6063
Business Licensing 801-483-6063
Code Enforcement 801-464-6757
Fire Administration 801-483-6043
Justice Court 801-483-6072
Police Admin 801-412-3606
Promise 801-483-6057
Public Works 801-483-6045
Recreation 801-412-3217
Utility Billing 801-483-6074

Emergencies 911
Police/Fire Dispatch 801-840-4000



Mayor Cherie Wood

Growing Stronger Together: South Salt Lake in 2024

As we reflect on the progress made in South Salt Lake over the past year, it's clear that our community is thriving more than ever. We've come together to make significant strides toward improving our city's infrastructure, laying the groundwork for attainable and affordable housing, and prioritizing public safety. While the progress we've made is worth acknowledging, there's still much work to be done. At the heart of our approach has always been our belief that how we grow matters, and putting people first is the key to our success.

As we look ahead to 2024, I'm excited to continue building on this momentum and to keep prioritizing the needs of our residents. We know that great, sustainable communities are built on strong foundations and planning, so we're introducing two new priorities for the coming year: improving transportation access and enhancing our parks and green spaces.

Improving Access to Transportation

South Salt Lake has made great strides in creating a transportation system that meets the needs of its residents and visitors, and it's only going to get better. The city has developed a Mobility Plan to guide investments in transportation, to provide a safe, accessible, and inclusive mobility system that promotes a thriving economy, supports healthy communities, and enhances quality of life. With a focus on vehicle traffic, pedestrian traffic,

and public transportation, the plan aims to expand walking and bike trails, encouraging these options as modes of transportation and recreation.

Access to Parks and Nature

We all know that having places to walk to, enjoy, and visit is essential to a happier, healthier community. South Salt Lake is dedicated to providing parks, trails, and open spaces for all residents, ensuring that everyone can participate in recreational activities. The city is updating its 2015 Parks Master Plan to guide the planning of its parks and recreation facilities and fill gaps in underserved areas. The plan will provide a high-level vision for the park system and establish long-term planning tools for future growth, development, and improvement of SSL parks, open spaces, and trails.

With better transportation options and beautiful green spaces, we can all benefit from a more vibrant community. All priorities focus on this most important goal and that is to enhance the quality of life for everyone, and we're excited to take the next steps together.

The city welcomes your feedback to ensure the safety and accessibility for all in our community. Join us at our City Council or Planning meetings to learn more and share your thoughts (p. 2). You can also connect with me, your City Council representatives, or SSL Neighborhood Connect to make your voice heard.



We're making progress on two important projects: the Central Pointe Station Area Plan for our Downtown area, and we're well on our way with a 3900 South Shared Use Path Plan. To learn more, visit sslc.gov/373/How-We-Grow-Matters.



Connecting people to nature and each other through parks and trails, like this scenic trail along Mill Creek at Fitts Park. South Salt Lake's commitment to providing safe, accessible, and beautiful outdoor spaces strengthens the community and promotes a healthier lifestyle for all.



Public Meetings

For more info: www.sslc.gov

City Council

Wed, Jan 10, 7 p.m.

Wed, Jan 24, 7 p.m.

Planning Commission

Thu, Jan 18, 7 p.m.

Holiday Closure

SSL City Offices and Community Centers will be closed on Monday, January 15, 2024, in observance of Martin Luther King, Jr. Day.

Follow the Rules of Snow Removal



- Remove snow and ice from sidewalks in front of homes, buildings and parking lots.
- Remove snow the same day it falls or by 10 a.m. the next day if snow falls into late evening.
- Do not shovel snow onto roads, shovel it away from the road and onto your property when clearing driveways and sidewalks.
- To avoid snow buildup in front of your driveway, give snowplows room to operate. Clear the curb-side area on the left side of your driveway for the plow to unload their snow. Avoid parking on any city street from 2 to 6 a.m.

Christmas Tree Pick-up Program

In January, SSL Public Works will collect Christmas trees curbside (natural trees only) at no cost. Ace Disposal will also collect trees during the second week of January (Jan 8-11) on your regularly scheduled garbage pick-up day.



CITY COUNCIL CORNER

Understanding Municipal Government:

How Our Three Branches Work Together to Benefit Our Community

Sharla Bynum, District 3

In South Salt Lake, city government powers are distributed among three separate branches to ensure a balance of power and effective governance. These branches include legislative, executive, and judicial, each with their respective functions, and mirror the structure of state and federal government equivalents. Each branch plays a crucial role in creating a strong community, and it's important to understand how they impact our daily lives.

EXECUTIVE BRANCH — In South Salt Lake, Mayor Cherie Wood is the city's chief executive, exercising oversight of day-to-day operations and enforcing city laws and ordinances. Being a strong-mayor system, the mayor is responsible for appointing department heads. One of the most important responsibilities of a mayor is creating and managing the city budget, which involves allocating funds to various issues such as local infrastructure, parks, recreation services, emergency services, and public works (streets, sewers, snow removal, signage...).

LEGISLATIVE BRANCH — The legislative branch, also known as the city council, is a body of elected officials responsible for creating and passing laws and ordinances that benefit the community. As representatives of their specific district or all districts as at-large members, they work alongside the mayor to ensure that the city runs smoothly and that the community's needs are met.

JUDICIAL BRANCH — The judicial branch comprises the municipal court, which deals with local law enforcement. They manage court cases and our Justice Court Judge presides. The municipal court is housed in the local courthouse and plays a crucial role in ensuring that the laws are enforced and that justice is served.

Dividing the powers of city government among three separate branches ensures that no one branch becomes too powerful or dominant and that all branches work together to maintain a balance. In South Salt Lake, the three branches of government work together to ensure that the needs of the community are met and that laws are enforced, to create a thriving community for all.

Note: Opinions expressed here may not be representative of all Members of the City Council.

SSL Welcomes Two New City Council Members in 2024



Nick Mitchell, District 4

"My favorite thing about South Salt Lake is the diversity we have in our city! I love seeing people from all over the world coming to South Salt Lake and I think our Council is a good representation of the diverse community that we represent. I am excited to see the many new faces I will see over the years to come!"



Paul Sanchez, District 5

"I love South Salt Lake because of the wonderful community I discovered, nestled in a safe neighborhood with convenient access to Trax and the freeway. It felt like the perfect place to call home. But, most importantly, South Salt Lake's charm is heightened by its proximity to a park, specifically Harmony Park. It allows me the joy of playing fetch with the loves of my life: Amari, Boots, and Luna."



LEAD FREE SSLC

Learn More and Get Started Today!



Lead and Copper Survey: Do You Have Lead Water Pipes?

The SSL Water Division is currently seeking resident participation in determining if you have lead water service lines (the pipes that run water from the City water main into your home). It's a quick and simple process to check the material of your water line, and then complete a brief online survey to submit your results. As a utility that provides water to the public, we must comply with the EPA Lead and Copper Rule that requires us to report lead water service line data back to the federal government. By participating you gain knowledge about your water service line and what the potential lead exposure is to you and your family. Resources are available to help address lead pipe concerns. Learn more at sslc.gov.

South Salt Lake City Council Action Report Summary

Full agendas, minutes, handouts, and video recorded meetings available at: www.sslc.gov/160/City-Council

Date	Agenda Item	Subject	Action	Next Step
12/13	Appointment by the mayor	Brie Brass presented to the Council for advice and consent as the Deputy City Attorney	Approved	No further action needed
12/13	Fire Department Annual Report	Fire Chief, Terry Addison, presented the Fire Department's Annual Report. The department received a total of 7,554 calls for service from July 2022-June 2023.	Info provided to the Council	No further action needed

Public Safety

Stay Safe this Winter: Driving Concerns in Utah

As winter blankets our beautiful state in a pristine layer of snow, all of us need to be mindful of the unique challenges that winter driving in Utah brings. Whether you're a seasoned local or a recent transplant, the icy roads and snowy conditions demand extra caution and preparation.

Snow and Ice Accumulation. Utah winters are known for their heavy snowfall, which can quickly lead to slippery road conditions. Ice patches often form, especially during the night, making driving hazardous.

Rapid Weather Changes. Utah's weather can change rapidly, leading to unexpected storms and sudden drops in temperature. Stay informed about weather forecasts and be prepared for any unexpected shifts in driving conditions.

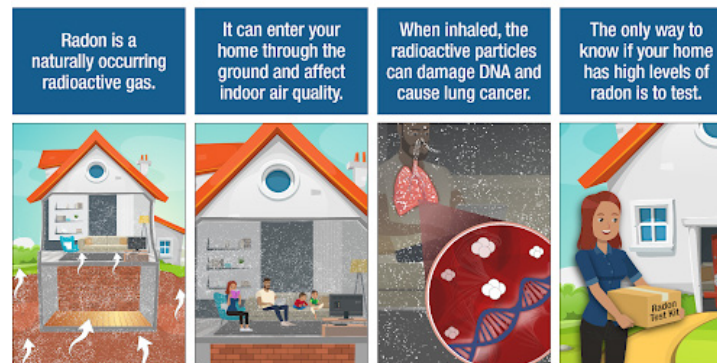
Mountainous Terrain. The diverse topography of Utah means that many residents navigate mountainous roads. These areas can experience more severe weather conditions, so exercise caution and be prepared for challenging terrains.

Winter Driving Safety Tips:

- Check your vehicle: Tires, brakes, and fluids.
- Stay informed: Tune in to traffic reports and road conditions.
- Plan ahead: Check the weather, inform someone, and pack an emergency kit.
- Slow down: Reduce speed and increase the following distance.
- Use winter tires for better traction.
- Be cautious on hills and keep a safe distance.
- Use your lights (even during the day) for better visibility.
- Practice safe braking: Apply steady pressure if your vehicle has ABS.
- Avoid distractions: Focus on the road for quick reactions.



National Radon Action Month: Test. Fix. Save a Life.



Test. Fix. Save a life. Learn more at epa.gov/radon.

EPA United States Environmental Protection Agency

January is National Radon Action Month, and it's important to know the risks associated with radon exposure. Radon is an invisible, odorless gas that can seep into various types of structures, including but not limited to basements, slabs, and crawl spaces. It is the second-leading cause of lung cancer after cigarette smoking, and scientists estimate that 20,000 lung cancer deaths in the U.S. each year are attributed to it. Testing for radon is the only way to determine if it is present at dangerous levels. Short-term (2-90 days) and long-term (more than 90 days) test kits are available, with the long-term kit producing more accurate results. The EPA website (www.epa.gov) can help you find a radon test kit or measurement and mitigation professional near you.

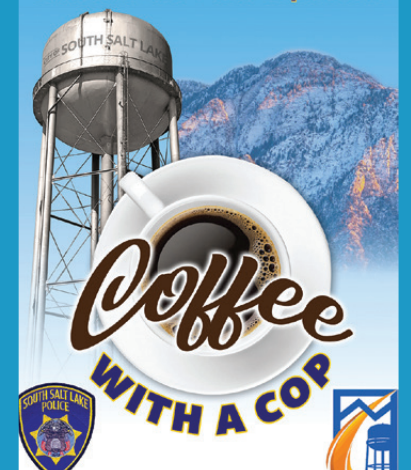
Apply Now! Seeking Civilian Review Board Members



The Civilian Review Board (CRB) fosters communication and accountability between the South Salt Lake Police Department and the community. As a voting member of the CRB, meeting up once a month, you'll review complaints of potential police misconduct resulting from Use of Force and Vehicle Pursuit cases, and provide recommendations. Your experience and perspective will be invaluable in fostering greater communication and accountability between the South Salt Lake Police Department and the community. Visit the SSL Employment page for details at sslc.gov. Questions? Reach CRB Chair, Joy Glad at jglad@sslc.gov.



South Salt Lake Police Department



Coffee with a Cop

Jan 3, 9-10 a.m.

In-Person

Délice Bakery & Café

2747 S State Street

Business Watch

Jan 4, 5 p.m.

Granite Branch Library

3331 S 500 East

Neighborhood Watch

Jan 4, 7 p.m.

Go to sslc.gov for the virtual link

Civilian Review Board

Mon, Jan 8, 6:30 p.m.

The public is encouraged to attend in-person at City Hall in the Council Chamber, or through a virtual link at www.sslc.gov.

Volunteer at the Pamela Atkinson Resource Center



Want to get involved, donate, or find out more? Let's point you toward TheRoadHome.org to volunteer!



South Salt Lake

COMMUNITY CENTER

2530 S 500 East
801-412-3217



South Salt Lake Central Park

COMMUNITY CENTER

2797 S 200 East
801-386-4949



South Salt Lake Historic Scott School

COMMUNITY CENTER

3280 S 540 East
801-803-3632

Grow Your Business

At any stage of your business, certified business consultants are available to assist you with the following services:

- ✓ Business Plans
- ✓ Start-Up Assistance
- ✓ Finance & Capital
- ✓ Marketing & Sales
- ✓ Customer Relations
- ✓ Business Valuation
- ✓ Employee Management
- ✓ Market Research
- ✓ eCommerce
- ✓ And more!

Jim Herrin



Bryce Hansen



Meet with a SBDC counselor every 1st and 3rd Wednesday of the month at the Promise SSL Co-Op from 10 AM to 12 PM



Grow Your Business with Free Advice from the SBDC

You are not alone on your journey to success. In addition to providing confidential business consultation, the Small Business Development Center (SBDC) offers trainings from start-up to succession planning and everything in between. No matter what stage your business is in, the SBDC has the tools to help you succeed. Starting January 17th, you can meet with SBDC counselors Jim Herrin or Bryce Hansen every 1st and 3rd Wednesday of the month at the Promise SSL Co-Op from 10 AM to 12 PM. Get advice on business planning, marketing, cash-flow projections, company valuation and more. This is all completely free to you! Appointments or walk-ins are accepted.

MOSIAC INTER-FAITH'S

MANNA MARKET

Central Park Community Center

2797 S 200 E. SSL, UT

The Manna Market is an outdoor resource distribution program where community members can get food and clothes. With the support of the Utah Food Bank and community donations, we offer hope to those in need. Items are offered on a first come, first served basis while supplies last each day.

Tuesdays, Wednesdays, and Thursdays
8:30 am - 10:00 am



**Starting
January 16th**

For more information call us at 801.721.2641

Salt Lake County Senior Center EVENTS FOR JANUARY 2024

Live Entertainment

Dieter Wachtel – Friday, Jan 5 at 10:30
Rich Dixon – Friday, Jan 12 at 11:30 am
Kevin the piano animal – Friday, Jan 19 at 10:30 am

Special Meal:

Birthday Special – Tuesday, Jan 9
Holiday Special – Friday, Jan 12
(Martin Luther King Jr. Day special)

Presentation – Lead Poisoning Prevention

Wednesday, Jan 3 at 10:30 am

Craft day with Vickie: Gnome snowman

Thursday, Jan 11 at 10:30 am

Stretching Yoga on Wednesdays at 2:30 pm

Chair Yoga on Fridays at 1:00 pm

Vital Aging: Monthly group Wellness

Discussions with a licensed therapist

Wednesday, Jan 17 at 10:30 am
Call 801-539-7069 to make a one-on-one appointment.

Art Class with Laura Wilson in the Co-Op

Wednesdays at 10:00 am

Living Well with Chronic Pain Workshop

Thursdays, Feb 15 – Mar 21 from 12:30 – 3:00 pm

SSL Community Center • 2531 S 400 East
385-468-3340 • Hours: 8:30 am – 4 pm



Keeping our Promises of
education, safety, and opportunity
across 14 programs throughout the City.



801.483.6057



promise@ssl.gov



@PromiseSSL

Finding Affordable Housing Made Easier with Promise SSL's LMI Housing Navigator

With attainable and affordable housing becoming a growing issue, Promise South Salt Lake has taken a proactive step towards addressing this problem by hiring a new LMI Housing Navigator. The goal of this initiative is to help low to moderate-income



Meet our new LMI Housing Navigator, Rebecca Yund. As part of the Promise SSL team, her new position's role is to assist those in navigating the process of finding affordable housing in our community.

families navigate the often-complex process of finding affordable and permanent housing. Passionate about this cause, Rebecca Yund, a resident of South Salt Lake and a professional with a background in community development and engagement, has been hired for the position. She is now available to connect with and share valuable information and resources with those seeking housing assistance. "We believe that everyone deserves a safe, stable place to call home," says Yund. "I am excited for this

new position to help those in our community achieve this goal." To learn more, please reach out to our LMI Housing Navigator at ryund@ssl.gov or call 801-707-0953.

Donate to our Furnishing Fund

Help us create welcoming spaces
and breathe new life to our
community centers.

By contributing, you're helping
us ensure that everyone has a
comfortable and inspiring place
to gather that fosters unity,
learning, safety, and opportunity.
Our community deserves it!



Thank You, Torus!



We are excited to welcome Torus, a solar energy company, into our community and work with them to develop a strong partnership. This December they donated items for and helped us put together several hundred take-home activity kits at their warehouse so that youth in our afterschool programs could have activities to do while they were home for the winter break. It is inspiring to see a business go all in to show support to and be engaged in the local community in which they are based. The Torus and Promise SSL Leadership teams have met with each other and are working to see how we can best collaborate to support our youth and families. Thanks again Torus, for your engagement in our work!

Historic Scott School Remodel Offers Expanded Opportunities for Youth and Community

The Newly remodeled Redwood Building at Historic Scott School is a big accomplishment that we have been working towards for a long time. We are grateful for the support and funding from the Salt Lake County Office of Regional Development and the US Department of Housing and Urban Development (HUD). Because of them and our team listing this as a priority, dark and dusty corners have been transformed and now let ample light into the building.

Our grand opening event was a culmination and celebration of the many years of visioning, planning, and hard work that went into this project by many different people. Promise SSL is excited to start youth and community programming back up in that space and is dedicated to the continued improvement of not only this community center but all of our community spaces. You can now donate to our furnishing fund to help us continue to update and create the welcoming spaces that our community deserves.



COMMUNITY ART CLASSES



SSLArts.org

To learn more and register for Community Art Classes, visit SSLArts.org or call 801-483-6018. Create an account at sslc.gov and opt-in to receive our monthly SSL Arts Council E-Newsletter.

ART55+ Creative Arts for Seniors

Instructor Laura Sharp Wilson
Every Wednesday
10:00-11:30 AM
SSL Community Center
2531 S 400 East
FREE!

Art Classes for January & February

Colored Pencil Techniques by
Bad Dog Arts
Weds, Jan 10 - 31

Beginning Fiddle Jam
Mon, Jan 22

Zentangle Club
Mon, Jan 29

Exploring Collage I with Sue
Martin - Tues, Feb 6- 27

Kintsugi Healing Group with
Michelle Markay Nelson
Tues, Feb 6 - 27

Mindful Photo with Danielle
Waters - Mon, Feb 26

Beginning Fiddle Jam
Mon, Feb 12

Beginning Classical Guitar
ages 55+
Weds, Feb 28 - April 19

Scan to register



With Bad Dog Arts

Wednesdays

January 10, 17, 24 & 31st

SSL Community Art Center Co-Op

Art Room 2531 S 500 E



Your car is ready! In 2023, local artist Lizzie Wenger added a beautiful Utah redrock landscape mural to the side of Emissions Plus on the off ramp of I-80 and State Street.

DID YOU KNOW YOU CAN OWN CHICKENS IN SSL?

Apply for a domestic poultry permit and follow the guidelines of Title 6 of the City's municipal code. (No Roosters!) SSL Animals Services recommends the following for your hens during the winter:

PROVIDE ADEQUATE AND ICE-FREE WATER

Chickens need to have continual access to drinking water because they are trying to conserve energy and stay warm. Electric water-bucket de-icers can help keep water tanks from icing over.

BUMP UP THE PROTEIN AND ADD A LIGHT

The frozen ground reduces chickens' ability to forage for insects and worms. Experts recommend a higher protein feed of at least 20% to keep them laying.

FORTIFY THE COOP

Make sure your chickens have an enclosed area and will be protected from wind and moisture.



MURAL FEST 2024

CALL FOR WALLS

Turn your business exterior into a work of art!

Host a mural and become a part of Utah's largest outdoor mural festival. Celebrate our local creative businesses and help revitalize Downtown South Salt Lake. Email lallen@sslc.gov or visit:

themuralfest.com



INDOOR YOUTH SOCCER

For youth 4 years old - 6th grade

Practice starting February 20

Register before February 2
(space is limited)

For registration and information:

- Visit www.sslc.gov
- Call 801-412-3217
- Scan the QR code



BE OUR GUEST AND JOIN US FOR OUR ENCHANTED ANNUAL CELEBRATION OF

Ties & Tiaras

FRIDAY, FEBRUARY 2ND

6:00 PM - 8:30 PM

SOUTH SALT LAKE COMMUNITY CENTER

2531 S 500 E

Admission

ONLINE: \$4 A PAIR
\$1 EACH ADDITIONAL PERSON

AT THE DOOR: \$5 A PAIR
\$1 EACH ADDITIONAL PERSON

Everyone is welcome!

Scan to Register



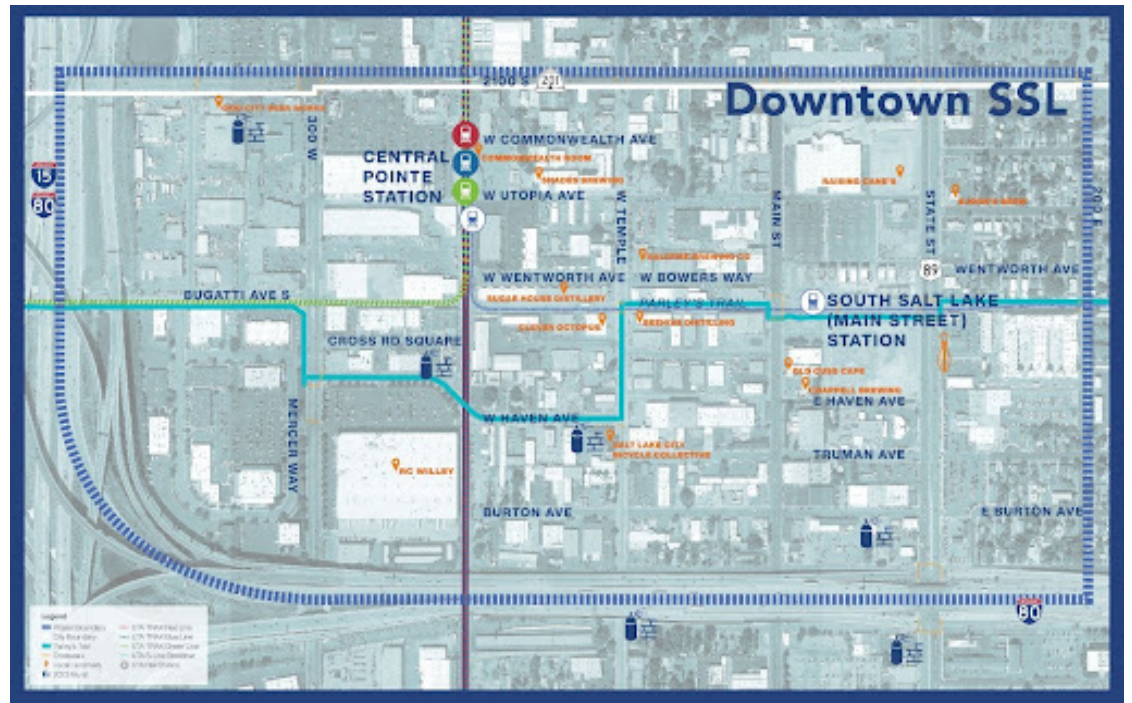
What is an HTRZ? Helping Us Expand Affordable Housing in South Salt Lake.

South Salt Lake is committed to expanding affordable housing options for all residents, and we're excited to announce our proposal for the Utah Housing and Transit Reinvestment Zone (HTRZ) program. The HTRZ program encourages mixed-use, multi-family, and affordable housing development within a certain radius of transit stations. Our proposal focuses on the Downtown area surrounding Central Pointe Station and SSL Main Street Station and includes requirements for affordable housing units, promoting certain transit-oriented community objectives, and enhancing public infrastructure.

The HTRZ program makes it possible for a portion of incremental tax revenue growth in the area around a transit station to be captured over a period of time to support development costs. This means that South Salt Lake can invest in income-targeted housing costs, structured parking, and other development costs that will expand affordable housing options.

We believe that everyone deserves access to safe and affordable housing. By participating in the HTRZ program, we can make improvements that will strengthen and fundamentally reshape our City, making it a better place for residents to live, work, and play.

Learn more about Utah's HTRZ program: wfrc.org/programs/htrz
SSL's Housing Plan and timeline: sslc.gov/374/Housing-for-All



To connect with the SSL Chamber, email: tereza@sslchamber.com

SOUTH SALT LAKE CHAMBER CORNER

Midtown Community Health Center: New Location



The South Salt Lake Chamber of Commerce commemorated the grand opening of Midtown Community Health Center's new location at 60 East 3750 South with a ribbon cutting in late November. As a private, non-profit organization, Midtown is dedicated to providing healthcare options for all individuals, regardless of their insurance status. They offer primary care, behavioral health, and dental services, and have an onsite enrollment specialist to assist individuals in accessing healthcare coverage. Midtown also extends a sliding fee discount program to income-eligible individuals and accepts most major insurance plans.

Midtown Community Health Center

60 East 3750 South

Hours: Mon – Fri, 7:30 am - 6 pm (closed for lunch: 1 pm – 2 pm)

Closed Saturday and Sunday

www.midtownchc.org

New Spot for Breakfast! Welcoming Egg Break to SSL

Discover your new go-to breakfast sandwich shop in the heart of South Salt Lake. We're egg-cited to announce a new restaurant, with a tasty array of egg breakfast sandwiches (on flaky buttery biscuits no less), sides like tater tots and loaded potato wedges, and a fresh squeezed orange juice bar. We hope that Egg Break will not only satisfy your cravings but also become a space for building community and connection in our community.

Egg Break

193 W 2100 South, Commonwealth District

M-Friday 7 am to 3 pm

Sat 8 am to 3 pm

www.eggbreakbreakfast.com

